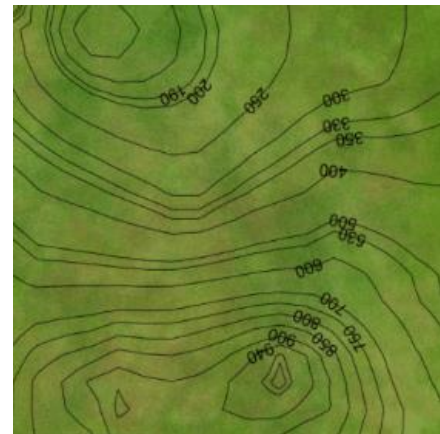


Vocabulary: Building Topographic Maps



Vocabulary

- Contour interval – the change in *elevation* between adjacent *contour lines*.
- Contour line – a line connecting points of equal elevation on a map.
- Elevation – the height of a location above a fixed reference point, usually sea level.
- Profile – a side view of a landscape or structure.
- Relief – the elevation difference between the highest and lowest points in a landscape.
 - To find the relief of a landscape, subtract the lowest elevation from the highest elevation.
- Topographic map – a map that uses contour lines to depict variations in elevation across a landscape.
 - Contours that form closed curves usually indicate hills or mountains but can also indicate depressions.
 - Contours that are close together indicate steep slopes, while contour lines that are far apart indicate flatter terrain.
 - Contour lines in a river valley or stream are often V-shaped, with the point of the V pointing uphill.



Topographic map